

BotaniGard® & Mycotrol®

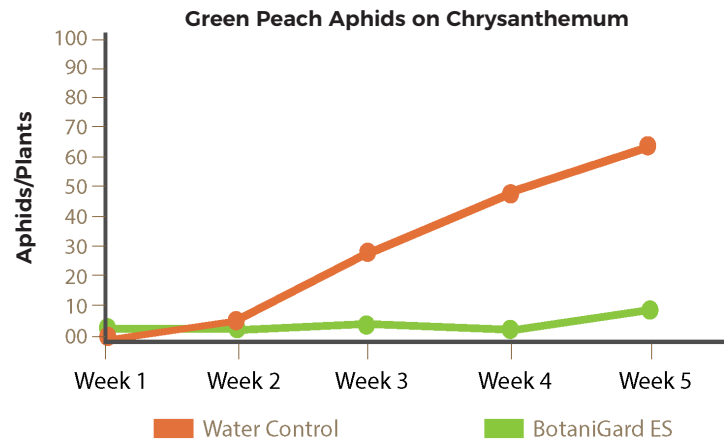
Early applications with BotaniGard mycoinsecticide (Mycotrol for organic production) is an effective way to control aphids such as green peach and melon in greenhouse ornamental and vegetable production. The beneficial fungus, *Beauveria bassiana* strain GHA is a reliable component to an IPM-based program. Start with monitoring, early treatment, good spray coverage and good housekeeping practices.

MONITORING PEST POPULATIONS IS CRITICAL IN ANY REDUCED RISK PEST CONTROL STRATEGY.

Begin spraying BotaniGard as soon as aphids or other problem insects are noticed. The key is to get your insect control program started early before insect populations build. Early treatment will keep your insecticide program costs low and avoid the need for harsh chemical rescue treatments.

VISUALLY INSPECT FLOWERS AND LEAVES FOR APHIDS.

Spraying should begin at the first sign of aphids. Aphid populations can build rapidly. Immatures grow quickly, molting (shedding their skin) in 12 to 16 hours. A second spray should be made three days after the first spray to contact those aphids that may have shed their skin prior to becoming infected. Sprays should continue on a 5-7 day schedule.

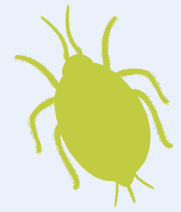


If the population is building rapidly or there is a migration of insects into the greenhouse, you may need to combine a chemical insecticide with your BotaniGard application to gain control of the population dynamics. BotaniGard can be tank-mixed with a variety of insecticides. Refer to BotaniGard Compatibility technical bulletin for specific compatibility information.

THOROUGH SPRAY COVERAGE IS CRITICAL TO PEST CONTROL. BOTANIGARD IS A CONTACT INSECTICIDE.

BotaniGard is a contact insecticide. The aphids need to be covered by the spray or come in contact with BotaniGard on the sprayed plant surface. Sprays should be directed to the portions of the plant with aphids, (i.e. typically the buds, the upper surface of the upper leaves and the infested). Sprays should continue on a 5-7 day schedule.

APHID MANAGEMENT TECHNICAL BULLETIN



APPLICATION	RATE	INTERVAL
1st application	1 qt/100 gal	first aphid
2nd application	0.5 qt/100 gal	3 days
Subsequent app.	0.5-1 qt/100 gal	5-7 days

GREENHOUSE SPRAY PROGRAMS TYPICALLY USE A NUMBER OF PRODUCTS FOR CONTROL OF MITES AND POWDERY MILDEW.

BotaniGard can be tank-mixed with most miticides and can be tank-mixed with some fungicides including Clearys® 3336, Tenn-Cop® 5E and Kocide®. The use of other fungicides may require an interval of several days between BotaniGard and fungicide sprays. BotaniGard can be used with sulfur volatilization programs. Refer to BotaniGard Compatibility technical bulletin for specific compatibility information for these and other products.



BOTANIGARD IS COMPATIBLE WITH MOST BENEFICIAL INSECT/MITE PROGRAMS.

Refer to the technical bulletin Biological Control Agents Use with Certis Products for further information. NOTE: Use caution when making BotaniGard applications to open blooms, especially on varieties known to be sensitive, it is recommended that a small group of plants be tested for effects on open blooms before making applications to the whole crop.

Always read and follow label directions. Refer to product labels for complete application details. Additional technical information is available on our website (CertisBio.com) or from your Certis technical sales representative. BotaniGard® is a registered trademark of Certis USA LLC. Always read and follow label directions.



Always read and carefully follow label directions.

Copyright 2022 Certis USA LLC.

1.800.250.5024 www.CertisBio.com

