

# BotaniGard® 22WP

MYCOINSECTICIDE

# BotaniGard® ES

MYCOINSECTICIDE

**BotaniGard® is a biological insecticide designed to control pests by penetrating the shell and breaking down the natural defenses from the inside out. It is ideal for use in controlled locations such as greenhouses, fields and nurseries that produce ornamentals, vegetables, fruits, berries, herbs and spices.**



## PRODUCT HIGHLIGHTS

The highest concentration of spores in a *Beauveria*-containing insecticide

Spores germinate within 24 hours of contact with the target pest. The fungus then penetrates the exoskeleton and multiplies within the host, killing it within 4-7 days

Infects and kills adult and immature stages of insect and mite pests across many labeled crops

Ideal in an IPM program as a stand-alone, in rotation, or as a tank mix partner

Controls resistant pests such as Q-Biotype Whitefly

Provides a level of control comparable to conventional chemical programs



Always carefully read and follow label instructions.

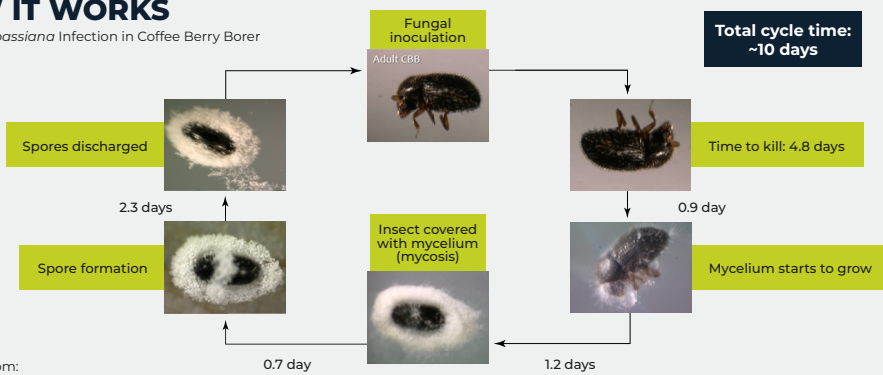


1.800.250.5024

[www.CertisBio.com](http://www.CertisBio.com)

## HOW IT WORKS

*Beauveria bassiana* Infection in Coffee Berry Borer



Adapted from:  
Vega et al. 2008. *Biological Control* 46: 72-82

As a contact insecticide, the applied spores infect directly through the outside of the insect's cuticle. Spores adhering to the host will germinate and produce enzymes that attack and dissolve the cuticle, which allows the product to penetrate and grow inside the insect's body, killing the insect.

Active ingredients are ground into a powder and later blended or mixed with diluent and surfactants to form the solution. This provides a uniform distribution of active ingredient when sprayed onto the crop.

## HOW TO APPLY

Application rate is dependent on insect population and foliage density; see label for details. There is no limit on the number of times you can apply BotaniGard in a season; a weekly application program can prevent population outbreaks. To apply, shake the container before measuring product and apply preventively or upon first appearance of pest, then in 7-day intervals to maintain pest-free crops and prevent outbreaks. Give thorough application for best results.

### BotaniGard ES

PESTS	APPLICATION RECOMMENDATION
Whiteflies, aphids	0.5-1 qt/100 gal
Thrips	1-2 qt/100 gal
Other labeled insects	0.5-2 qt/100 gal

\*\*Rate depends on the insect population and foliage density

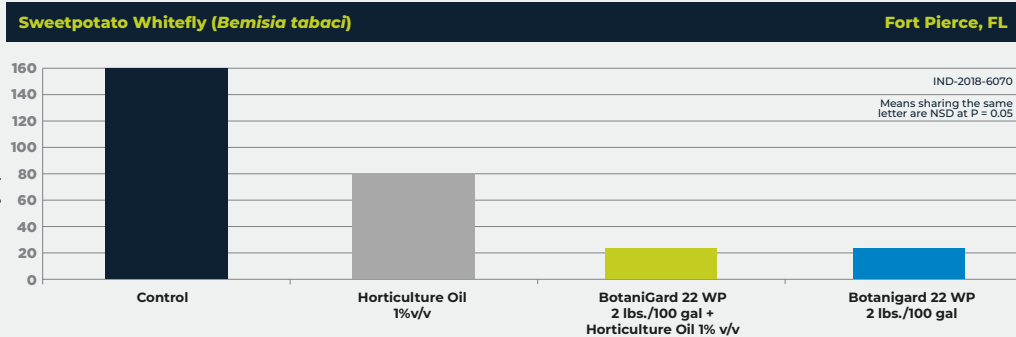
### BotaniGard 22WP

PESTS	APPLICATION RECOMMENDATION
Whiteflies, aphids	0.5-1 lbs./100 gal
Thrips	1-2 lbs./100 gal
Other labeled insects	0.5-2 lbs./100 gal

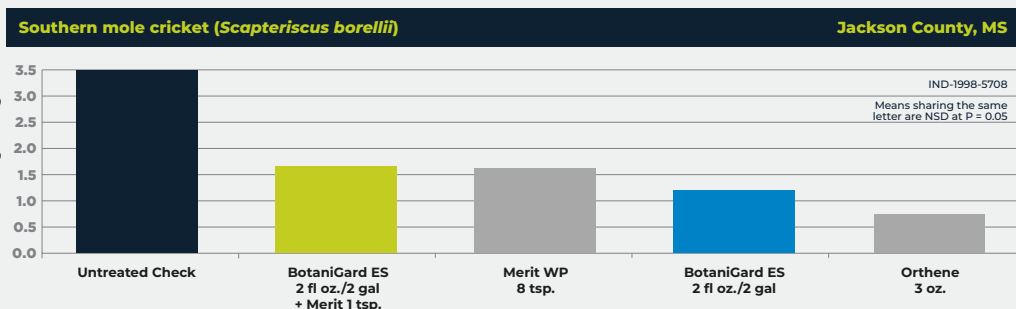
\*\*Rate depends on the insect population and foliage density

## TRIAL DATA

### BotaniGard 22WP



### BotaniGard ES



### ACTIVE INGREDIENT

*Beauveria bassiana* strain GHA

### KEY PESTS CONTROLLED

Aphids  
Leafhoppers  
Mealybugs  
Plant Bugs  
Psyllids  
Thrips  
Weevils  
Whiteflies  
Root Aphids

### KEY CROPS

Greenhouse, field and nursery crops  
Ornamentals and flowers  
Vegetables  
Fruits  
Herbs  
See label for full list

**CERTIS**  
Biologicals

1.800.250.5024

www.CertisBio.com

Always carefully read and follow label instructions.  
BotaniGard is a registered trademark of Certis Biologicals LLC.

Copyright 2022 Certis Biologicals.